

2 Brent Biennial: Pio Abad Mural
Remember this House, is the first permanent public artwork by leading British-Filipino artist Pio Abad. It takes the form of two murals on Kilburn High Road (on Burton Road and Willesden Lane). The objects presented in the murals



→ *Soul Refresher (Mountain Rose Soda)* by Abbas Zahedi. ©Thierry Bal

1 Brent Biennial Abbas Zahedi, Ariana Restaurant, 241 Kilburn High Rd
Soul Refresher (Mountain Rose Soda) has been produced for the Brent Biennial 2020 by Abbas Zahedi in collaboration with Square Root Soda. Works as a limited edition of 3000 bottles. This drink is a reminder and an offering that exists in various spaces and ways. It intends to encourage new dialogues about our social, political and emotional connections to food, drink and care.



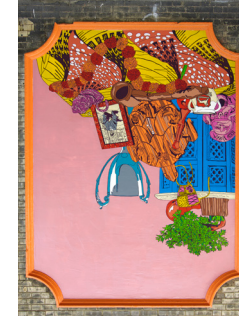
Brent Biennial Walk Kilburn

Google Map: shorturl.at/uvPR4

This walk follows the Roman Watling Street and then the course of the 'lost' River Westbourne.

4 Brent Biennial: Pio Abad Mural
 Located in Willesden Lane. Abad's practice is concerned with the social and political significance

3 Waterloo Passage
 Named after Waterloo Farm and Villas that occupied the site until the late 1800's when railway driven development swept through the area. In 1851 the population of Kilburn was just 550. Some of the fields behind the High Road were used as rifle ranges to train soldiers for the Crimean War of the 1850s.



← *Remember This House* by Pio Abad on Burton Road. ©Andy Keate

reveal an unexpected history of Kilburn High Road by bringing together artefacts from the Brent Museum Archives, ornaments of personal significance shared by local residents and items that Abad photographed on the high road.

face down in the buttercups, tickle a brace of trout against the coming Friday"
 – Alan Ivimey, 1926

The Westbourne or Kilbourne is recorded as being a major river comparable to the River Fleet. It ran from Hampstead to the Thames at Chelsea. As the population of the area grew it was forced beneath the ground into a brick culvert and incorporated into the sewer system. The section flowing along Kilburn Park Road is marked on a map from 1874 as the Ranelagh Sewer.

12 Brent Biennial: Yasmin Nicholas
 Electronic billboard outside Granville Community Centre. Nicholas' work consists of a mixed media including poetry, photography, film and sowing, accounts of daily life, drawing attention to particular experiences, identity, race and diaspora and Caribbean culture.

6 Watling Street
 Kilburn High Road follows the route of an ancient thoroughfare that became a major Roman Road

5 Gaumont State Cinema
 Designed by the great cinema and theatre architect George Coles, its opening night in 1937 was broadcast on BBC Radio. With a capacity of 4000 seats, it was one of the largest cinemas in Europe at the time. The tower is said to emulate a New York skyscraper. The famous names Frank Sinatra, Ella Fitzgerald, The Beatles, David Bowie, and Sarah Vaughan. The Who's 1977 performance at the State was filmed for the documentary *The Kids Are Alright*, released in 1979. Apparently, it still has the original working Wurlitzer organ.

of things. His work, in a range of media including textiles, drawing, installation and photography, uses strategies of appropriation to mine alternative or repressed historical events, unravel official accounts and draw out threads of complicity between incidents, ideologies and people.

9 WH Smith
 The famous bookseller purchased Kilburn House in 1840. He lived there until 1858 with his son, also named WH Smith, who went on to become First Lord of the Admiralty and was immortalised in the Gilbert and Sullivan satirical opera *HMS Pinafore*.

10 Site of Bridge over the River Westbourne / Kilbourne
 Look on the pavement for a plaque that marks the spot of the old stone bridge over the River Westbourne (also known as the Kilbourne at this point). The river rose in Hampstead and flowed down through the fields, collecting various streams along the way to meet another branch from Brondesbury. It crossed Watling Street near the end of West End Lane. The bridge is mentioned as far back as the 13th Century.

11 The 'lost' River Westbourne, Kilburn Park Road
 "In the lush meadows of Westbourne, near the highway to Harrow, the citizen of London could once see dragonflies and loosestrife, or, lying

8 Brent Biennial: Yasmin Nicholas
 Poster at Lassal Gayle's Kweenam Grocery, Kilburn Market. Brent based artist Yasmin Nicholas has

7 Kilburn Priory
 Priory Park Road is a reference to Kilburn Priory established in 1130 on the site of a holy well and hermitage occupied by a recluse called Godwyn who granted the land to the Abbot and monks of Westminster Abbey. It was then given to a sisterhood of three nuns who had been maids to 'Good Queen Maud', consort to Henry I. The actual priory was located to the east of Watling Street in what is today the London Borough of Camden.

and later known as Watling Street. It's believed to stretch back in time to the Neolithic era. Some have claimed it even pre-dates human settlement and was created by migrating animals. The route used by the Britons ran from Richborough on the Kent coast to Holyhead in Wales. The paved Roman Road linked the port of Dover to Wroxeter in Shropshire. The route is still in use today as the A5 Trunk Road.

developed new collage works *The Children of the Sugar* centering personal and collective histories that form Brent's identity. Her collages bring together community portraits, archival images and the words of four poems she has written 'The Wind Rushed In', 'Back Home', 'Fingerprints' and 'Higher'. The work is shared on public signage boards, the windows of local businesses and bus stops throughout the borough, using these spaces not as advertising but as public and community notices.

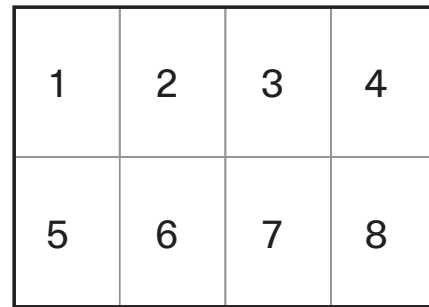


↑ *The Children of the Sugar* by Yasmin Nicholas. ©Thierry Bal

How to fold your map

1 Fold a piece of paper into eighths

Spend some time folding, as the quality of your folds will determine the quality of your booklet.

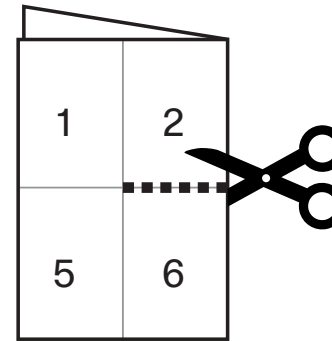


2 Unfold the paper

You will see eight separate panels. These will become the pages of your booklet.

3 Fold the paper short edge to short edge

You should fold the paper in half the opposite way from your first fold.

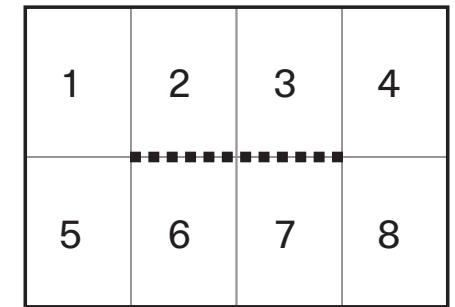


4 Cut the paper

Place the paper so that the folded edge is facing you. Then cut along the vertical fold seam in the middle of the paper until it intersects the horizontal fold seam.

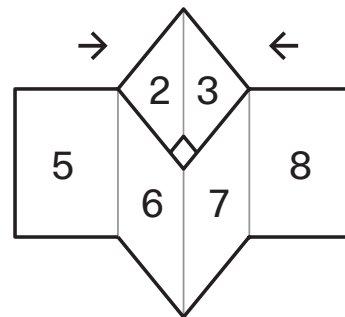
5 Unfold the paper

It should now have the original eight fold panels, but there should be a slit down the center of the paper, between the middle four panels.



6 Fold the paper in half, long edge to long edge

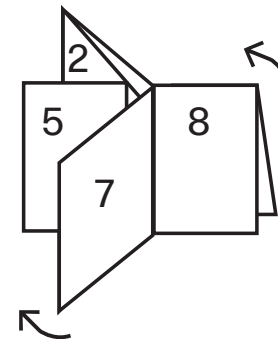
Repeat your very first fold. The cut part of the paper should fall along the middle of the folded edge.



7 Fold the paper into a booklet shape

Turn your paper so that the cut edge is up in the air. Then push the two ends toward each other. Separate the two middle seams from each other.

7.1 You will need to reverse the direction of the fold on one of the seams.



7.2 Choose two adjacent "wings" of the paper and push them towards each other, enclosing the other pages of the booklet inside them.

8 Flatten your booklet

Choose two adjacent "wings" of the paper and push them towards each other, enclosing the other pages of the booklet inside them.

